

# LEADED RADIAL LEADED POWER LINE CHOKES / LRC TYPE

## FEATURES

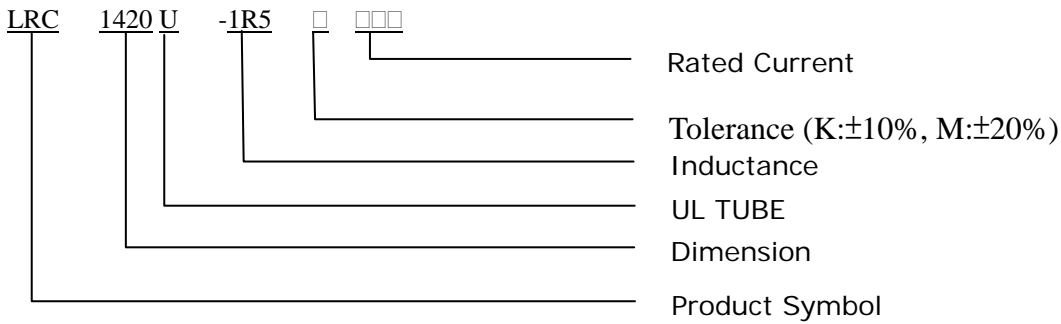
- ◆ The use of high saturation flux density material makes these coils ideal for use in switching regulated power supply application and wherever high current choke values in a small physical size are needed.



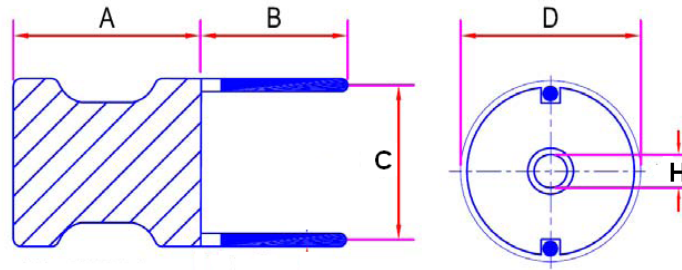
## APPLICATIONS

- ◆ Switching Regulators
- ◆ SCR and Triac Controls
- ◆ RFI Suppression
- ◆ Power Amplifiers
- ◆ Speaker Crossover Networks
- ◆ Filters

## ORDERING CODE



## SHAPES



## DIMENSIONS UNIT: mm

Part No.	A (MAX)	B	C (REF)	D (MAX)	H (MIN)
LRC1420U	21.5	15 ± 3.0	12.0	16.5	3.0
LRC1820U	21.5	15 ± 3.0	15.0	21.0	3.0
LRC2620U	21.5	15 ± 3.0	22.0	28.0	5.0
LRC3525U	28.0	15 ± 3.0	30.0	40.0	3.6



CORE MASTER ENTERPRISE CO., LTD.

<http://www.coremaster.com.tw>

## LEADED RADIAL LEADED POWER LINE CHOKES / LRC TYPE

### SPECIFICATIONS

Part No.	Inductance ( $\mu$ H) At 1KHz	Rated Current (A)	DC Resistance ( $\Omega$ ) Max	Part No.	Inductance ( $\mu$ H) At 1KHz	Rated Current (A)	DC Resistance ( $\Omega$ ) Max
LRC1420U-1R0M-9R0	1.0	28	0.003	LRC1820U-1R0M-11R4	1.0	60	0.003
LRC1420U-1R2M-9R0	1.2	26	0.003	LRC1820U-1R2M-11R4	1.2	54	0.003
LRC1420U-1R5M-9R0	1.5	23	0.004	LRC1820U-1R5M-11R4	1.5	48	0.003
LRC1420U-1R8M-9R0	1.8	21	0.004	LRC1820U-1R8M-11R4	1.8	44	0.003
LRC1420U-2R2M-9R0	2.2	19	0.005	LRC1820U-2R2M-11R4	2.2	40	0.004
LRC1420U-2R7M-9R0	2.7	17	0.005	LRC1820U-2R7M-11R4	2.7	36	0.005
LRC1420U-3R3M-9R0	3.3	15	0.005	LRC1820U-3R3M-11R4	3.3	33	0.005
LRC1420U-3R9M-9R0	3.9	14	0.006	LRC1820U-3R9M-11R4	3.9	30	0.005
LRC1420U-4R7M-9R0	4.7	13	0.007	LRC1820U-4R7M-11R4	4.7	28	0.005
LRC1420U-5R6M-9R0	5.6	12	0.007	LRC1820U-5R6M-11R4	5.6	25	0.006
LRC1420U-6R8M-9R0	6.8	11	0.008	LRC1820U-6R8M-11R4	6.8	23	0.007
LRC1420U-8R2M-9R0	8.2	10	0.009	LRC1820U-8R2M-11R4	8.2	21	0.007
LRC1420U-100K-9R0	10	9.0	0.010	LRC1820U-100K-11R4	10	19	0.009
LRC1420U-120K-8R5	12	8.5	0.011	LRC1820U-120K-11R4	12	17	0.009
LRC1420U-150K-7R2	15	7.5	0.015	LRC1820U-150K-9R0	15	15	0.013
LRC1420U-180K-6R8	18	6.8	0.016	LRC1820U-180K-7R2	18	14	0.018
LRC1420U-220K-5R5	22	6.0	0.025	LRC1820U-220K-7R2	22	13	0.019
LRC1420U-270K-4R5	27	5.5	0.030	LRC1820U-270K-5R5	27	11	0.026
LRC1420U-330K-4R0	33	5.0	0.040	LRC1820U-330K-5R5	33	10	0.029
LRC1420U-390K-4R0	39	4.5	0.046	LRC1820U-390K-5R5	39	9.5	0.030
LRC1420U-470K-2R8	47	4.0	0.062	LRC1820U-470K-5R5	47	8.8	0.035
LRC1420U-560K-2R8	56	3.7	0.069	LRC1820U-560K-5R5	56	8.0	0.039
LRC1420U-680K-2R8	68	3.4	0.077	LRC1820U-680K-4R8	68	7.2	0.053
LRC1420U-820K-2R8	82	3.1	0.083	LRC1820U-820K-4R8	82	6.6	0.060
LRC1420U-101K-2R8	100	2.8	0.095	LRC1820U-101K-4R0	100	6.0	0.080
LRC1420U-121K-2R0	120	2.5	0.127	LRC1820U-121K-4R0	120	5.5	0.090
LRC1420U-151K-1R6	150	2.3	0.181	LRC1820U-151K-4R0	150	4.8	0.098
LRC1420U-181K-1R6	180	2.1	0.217	LRC1820U-181K-4R0	180	4.4	0.110
LRC1420U-221K-1R6	220	1.9	0.240	LRC1820U-221K-2R8	220	4.0	0.150
LRC1420U-271K-1R6	270	1.7	0.300	LRC1820U-271K-2R0	270	3.6	0.213
LRC1420U-331K-1R3	330	1.5	0.336	LRC1820U-331K-1R6	330	3.3	0.305
LRC1420U-391K-1R0	390	1.4	0.460	LRC1820U-391K-1R6	390	3.0	0.320
LRC1420U-471K-R8	470	1.3	0.636	LRC1820U-471K-1R6	470	2.7	0.355
LRC1420U-561K-R8	560	1.2	0.696	LRC1820U-561K-1R6	560	2.5	0.388



**CORE MASTER ENTERPRISE CO., LTD.**

<http://www.coremaster.com.tw>

## LEADED RADIAL LEADED POWER LINE CHOKES / LRC TYPE

### SPECIFICATIONS

Part No.	Inductance ( $\mu$ H) At 1KHz	Rated Current (A)	DC Resistance ( $\Omega$ ) Max	Part No.	Inductance ( $\mu$ H) At 1KHz	Rated Current (A)	DC Resistance ( $\Omega$ ) Max
LRC2620U-3R9M-21R0	3.9	32.0	0.003	LRC3525U-3R9M-27R0	3.9	95	0.003
LRC2620U-4R7M-21R0	4.7	29.0	0.003	LRC3525U-4R7M-27R0	4.7	95	0.003
LRC2620U-5R6M-21R0	5.6	26.0	0.003	LRC3525U-5R6M-27R0	5.6	79	0.004
LRC2620U-6R8M-21R0	6.8	24.0	0.004	LRC3525U-6R8M-27R0	6.8	79	0.004
LRC2620U-8R2M-21R0	8.2	22.0	0.004	LRC3525U-8R2M-27R0	8.2	69	0.004
LRC2620U-100K-17R0	10	20.0	0.006	LRC3525U-100K-27R0	10	61	0.005
LRC2620U-120K-13R5	12	18.0	0.008	LRC3525U-120K-27R0	12	55	0.005
LRC2620U-150K-13R5	15	16.0	0.009	LRC3525U-150K-27R0	15	49	0.006
LRC2620U-180K-13R5	18	15.0	0.010	LRC3525U-180K-27R0	18	41	0.008
LRC2620U-220K-13R5	22	13.5	0.011	LRC3525U-220K-21R0	22	38	0.009
LRC2620U-270K-13R5	27	12.0	0.012	LRC3525U-270K-21R0	27	36	0.010
LRC2620U-330K-13R5	33	11.0	0.017	LRC3525U-330K-21R0	33	31	0.011
LRC2620U-390K-11R4	39	10.0	0.022	LRC3525U-390K-21R0	39	28	0.012
LRC2620U-470K-9R0	47	9.2	0.024	LRC3525U-470K-14R4	47	27	0.018
LRC2620U-560K-9R0	56	8.5	0.026	LRC3525U-560K-14R4	56	26	0.019
LRC2620U-680K-9R0	68	7.6	0.029	LRC3525U-680K-14R4	68	25	0.021
LRC2620U-820K-9R0	82	7.0	0.032	LRC3525U-820K-14R4	82	23	0.023
LRC2620U-101K-9R0	100	6.5	0.034	LRC3525U-101K-14R4	100	20	0.025
LRC2620U-121K-7R2	120	5.8	0.046	LRC3525U-121K-14R4	120	18	0.028
LRC2620U-151K-5R5	150	5.2	0.064	LRC3525U-151K-11R4	150	17	0.040
LRC2620U-181K-5R5	180	4.7	0.072	LRC3525U-181K-11R4	180	15	0.045
LRC2620U-221K-5R5	220	4.3	0.080	LRC3525U-221K-11R4	220	13	0.050
LRC2620U-271K-4R5	270	3.9	0.110	LRC3525U-271K-11R4	270	12	0.056
LRC2620U-331K-4R5	330	3.5	0.122	LRC3525U-331K-11R4	330	11	0.074
LRC2620U-391K-4R0	390	3.2	0.169	LRC3525U-391K-9R0	390	10	0.082
LRC2620U-471K-4R0	470	2.9	0.187	LRC3525U-471K-7R2	470	9.2	0.114
LRC2620U-561K-4R0	560	2.7	0.205	LRC3525U-561K-7R2	560	8.3	0.125
LRC2620U-681K-2R8	680	2.4	0.256	LRC3525U-681K-7R2	680	7.6	0.139
LRC2620U-821K-2R8	820	2.2	0.288	LRC3525U-821K-7R2	820	6.8	0.154
LRC2620U-102K-2R0	1000	2.0	0.426	LRC3525U-102K-5R5	1000	6.2	0.216
LRC2620U-122K-2R0	1200	1.8	0.462	LRC3525U-122K-5R5	1200	5.7	0.232
LRC2620U-152K-2R0	1500	1.6	0.518	LRC3525U-152K-4R5	1500	5.1	0.324
LRC2620U-182K-1R6	1800	1.5	0.705	LRC3525U-182K-4R5	1800	4.6	0.360
LRC2620U-222K-1R3	2200	1.3	1.020	LRC3525U-222K-4R0	2200	4.2	0.494
LRC2620U-272K-1R3	2700	1.2	1.140	LRC3525U-272K-4R0	2700	3.8	0.555
LRC2620U-332K-1R3	3300	1.1	1.270	LRC3525U-332K-2R8	3300	3.4	0.773
LRC2620U-392K-1R0	3900	1.0	1.670	LRC3525U-392K-2R8	3900	3.1	0.845
LRC2620U-472K-1R0	4700	0.9	1.860	LRC3525U-472K-2R0	4700	2.9	1.140



**CORE MASTER ENTERPRISE CO., LTD.**

<http://www.coremaster.com.tw>