

# UNSHIELDED SMD POWER INDUCTORS / FPI TYPE

## FEATURES

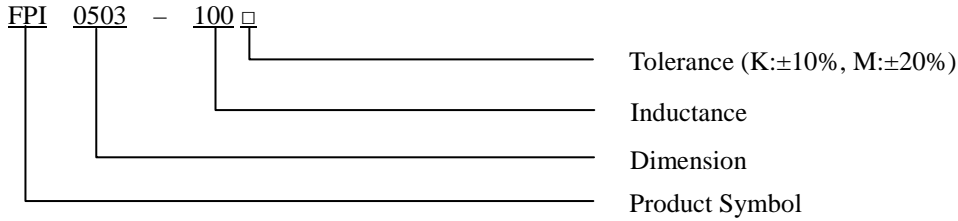
- ◆ Silver Plated Type
- ◆ High power and high saturation
- ◆ Ideal inductors for DC/DC conversion



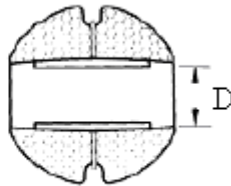
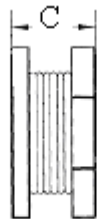
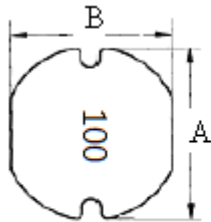
## APPLICATIONS

- ◆ Power supply for VTRs.
- ◆ Portable communication equipment.
- ◆ Notebook PCs.
- ◆ LCD televisions.
- ◆ DC/DC converters, etc.

## ORDERING CODE



## DIMENSIONS (UNIT: mm)



A	$5.8 \pm 0.3$	m/m
B	$5.2 \pm 0.3$	m/m
C	$3.0 \pm 0.5$	m/m
D	1.3 (REF)	m/m

## UNSHIELDED SMD POWER INDUCTORS / FPI TYPE

### ELECTRICAL CHARACTERISTICS FOR FPI0503

Part No.	Inductance (uH)	RDC ( $\Omega$ )	IDC (A)
FPI0503-1R0 □	1.0	0.030	10.00
FPI0503-2R2 □	2.2	0.040	5.10
FPI0503-2R7 □	2.7	0.050	4.80
FPI0503-3R3 □	3.3	0.065	4.00
FPI0503-4R7 □	4.7	0.070	2.90
FPI0503-5R6 □	5.6	0.090	2.80
FPI0503-6R8 □	6.8	0.092	2.60
FPI0503-8R2 □	8.2	0.095	2.40
FPI0503-100 □	10	0.170	2.20
FPI0503-120 □	12	0.180	2.10
FPI0503-150 □	15	0.200	2.00
FPI0503-180 □	18	0.210	1.70
FPI0503-220 □	22	0.300	1.50
FPI0503-270 □	27	0.315	1.30
FPI0503-330 □	33	0.380	1.10
FPI0503-390 □	39	0.400	0.95
FPI0503-470 □	47	0.500	0.90
FPI0503-560 □	56	0.700	0.80
FPI0503-680 □	68	1.000	0.75
FPI0503-820 □	82	1.050	0.73
FPI0503-101 □	100	1.100	0.70
FPI0503-121 □	120	1.200	0.63
FPI0503-151 □	150	1.500	0.56
FPI0503-181 □	180	1.800	0.53
FPI0503-221 □	220	2.500	0.48
FPI0503-271 □	270	2.600	0.43
FPI0503-331 □	330	3.000	0.38
FPI0503-471 □	470	3.800	0.37
FPI0503-561 □	560	4.700	0.33
FPI0503-102 □	1000	8.000	0.26

\* 100uH 以上 Test Frequency : 1KHZ/1V

\* 100uH 以下 Test Frequency : 2.52MHZ/1V

**CORE MASTER ENTERPRISE CO., LTD.**



<http://www.coremaster.com.tw>