

UNSHIELDED SMD POWER INDUCTORS / FPI TYPE

FEATURES

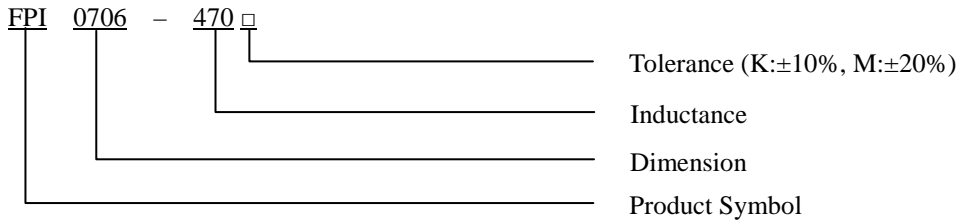
- ◆ Silver Plated Type
- ◆ High power and high saturation
- ◆ Ideal inductors for DC/DC conversion



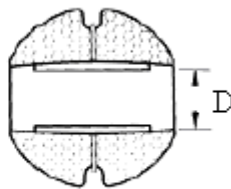
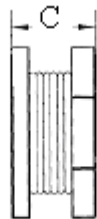
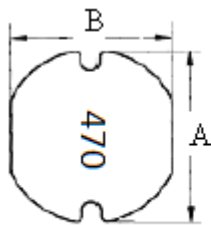
APPLICATIONS

- ◆ Power supply for VTRs.
- ◆ Portable communication equipment.
- ◆ Notebook PCs.
- ◆ LCD televisions.
- ◆ DC/DC converters, etc.

ORDERING CODE



DIMENSIONS (UNIT: mm)



| | | |
|---|---------------|-----|
| A | 7.8 ± 0.3 | m/m |
| B | 7.0 ± 0.3 | m/m |
| C | 6.2 ± 0.3 | m/m |
| D | 2.6 (REF) | m/m |

UNSHIELDED SMD POWER INDUCTORS / FPI TYPE

ELECTRICAL CHARACTERISTICS FOR FPI0706

| Part No. | Inductance (uH) | RDC (Ω) | IDC (A) |
|----------------------|-----------------|------------------|---------|
| FPI0706-470 □ | 47 | 1.850 | 2.20 |
| FPI0706-151 □ | 150 | 1.900 | 1.10 |
| FPI0706-821 □ | 820 | 3.000 | 0.49 |
| FPI0706-102 □ | 1000 | 3.900 | 0.45 |
| FPI0706-152 □ | 1500 | 5.800 | 0.39 |

* 100uH 以上 Test Frequency : 1KHZ/1V

* 100uH 以下 Test Frequency : 2.52MHZ/1V